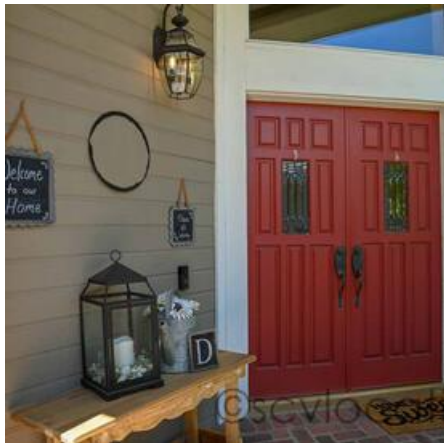
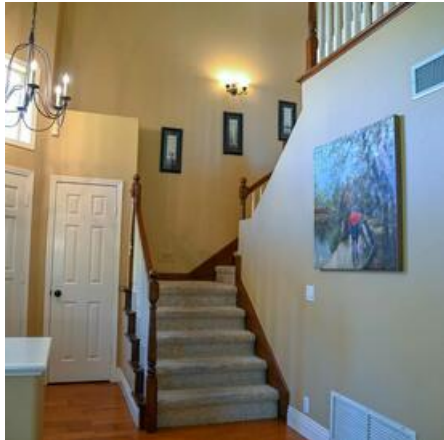


**FALL HOME**

**Location Photos**











## Image Zip File

[website-kb.zip](#)

The FALL HOME is ANYWHERE USA at its finest. Located on a cul-de-sac in the heart of Valencia, the FALL HOME offers a clapboard exterior with brick accents and birch trees. Enter through the red double doors into a wide-open, warm and inviting living and dining room. The family room and kitchen continue the warm farmhouse feel with white cabinets, a farmhouse sink and a brick fireplace. Upstairs you will find a beautiful master suite, complete with a master balcony over-looking the Santa Clarita Valley. The backyard offers a small lawn, no pool and a lovely outdoor living room. The FALL HOME is Americana at finest and is available to scout at your convenience.

## Primary Location Type

[Tract Home Residential](#)

## Location Features

[BRICK ACCENTS](#)  
[BRICK FIREPLACE](#)  
[BRICK WALKWAYS](#)  
[GRASS](#)  
[BIRCH TREES](#)  
[JACUZZI](#)  
[CARPET](#)  
[HARDWOOD FLOORS](#)  
[CLAPBOARD](#)  
[COVERED FRONT PORCH](#)  
[4-CAR GARAGE](#)  
[CLEAN GARAGE](#)  
[RED FRONT DOOR](#)  
[FRONT PORCH](#)  
[SMALL FRONT LAWN](#)  
[ANYWHERE USA RESIDENTIAL](#)  
[AMERICANA](#)  
[ALL-AMERICAN](#)  
[TRACT HOME](#)  
[TRACT HOME RESIDENTIAL](#)  
[ELEGANT PRIMARY BATH](#)  
[PRIMARY BALCONY](#)  
[PRIMARY RETREAT](#)  
[PRIMARY SUITE](#)  
[LARGE STAIRCASE](#)  
[TWO STORY](#)  
[FARMHOUSE SINK](#)  
[KITCHEN ISLAND](#)

[NO GRANITE](#)  
[MARBLE COUNTERS](#)  
[STAINLESS STEEL](#)  
[WALK-AROUND KITCHEN](#)  
[BACKYARD VIEWS](#)  
[BACKYARD LAWN](#)  
[OUTDOOR SEATING](#)  
[OUTDOOR LIVING ROOM](#)  
[NO POOL](#)  
[SMALL BACKYARD LAWN](#)  
[FARMHOUSE](#)  
[CUL DE SAC](#)  
[JULIET BALCONY](#)  
[KIDS ROOM](#)  
[TREE LINED STREET](#)  
[VAULTED CEILINGS](#)  
[WINDOW PANES](#)  
[HILLTOP VIEW](#)  
[EXPANSIVE VIEWS](#)  
[WARM MODERN](#)